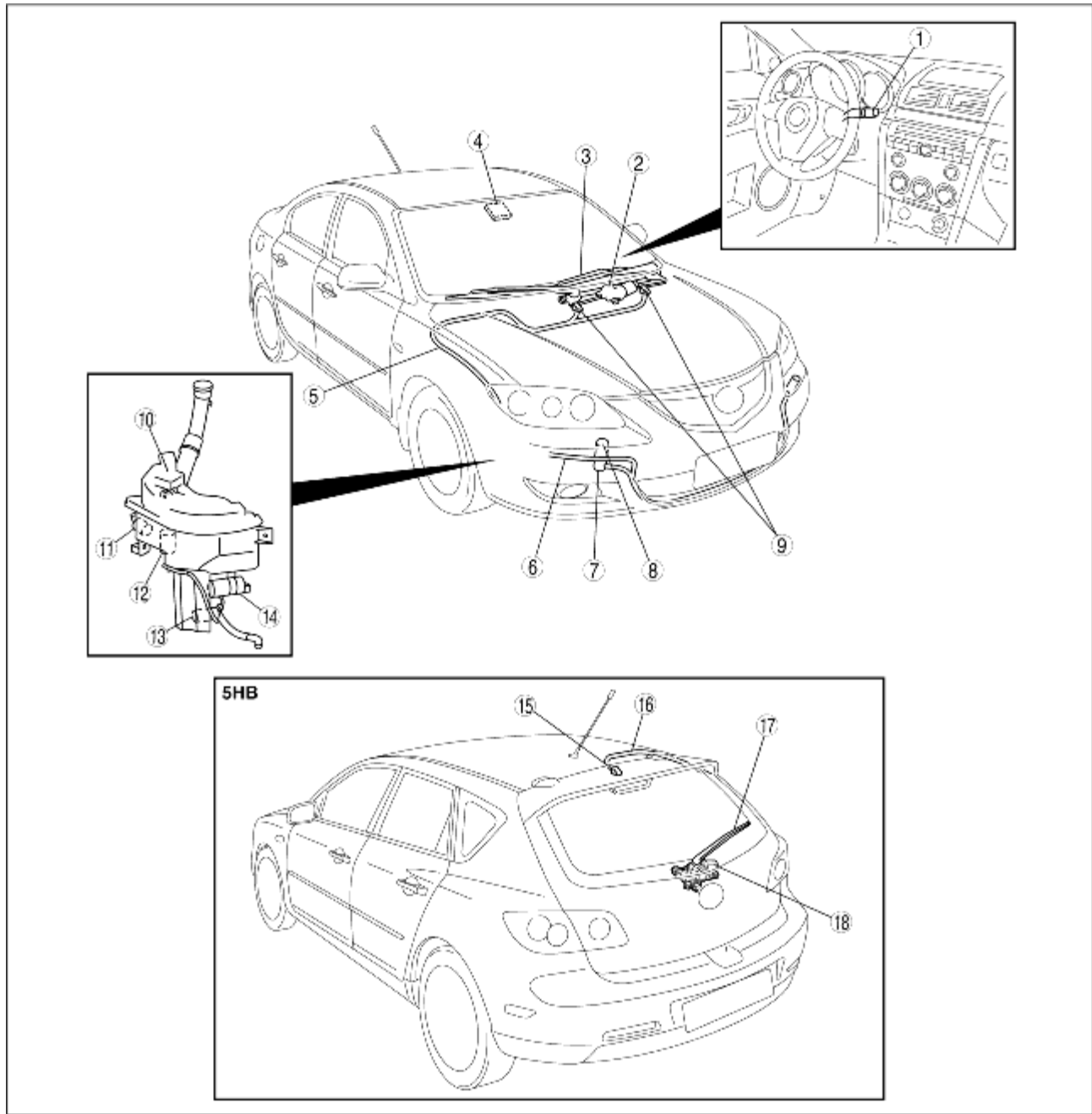


# WIPER/WASHER SYSTEM LOCATION INDEX

B3E091900000W01



B3E0919W101

1	Windshield wiper and washer switch (See <a href="#">WIPER AND WASHER SWITCH REMOVAL/INSTALLATION.</a> ) (See <a href="#">WINDSHIELD WIPER AND WASHER SWITCH INSPECTION.</a> ) (See <a href="#">REAR WIPER AND WASHER SWITCH INSPECTION.</a> )
2	Windshield wiper motor (See <a href="#">WINDSHIELD WIPER MOTOR REMOVAL/INSTALLATION.</a> ) (See <a href="#">WINDSHIELD WIPER MOTOR INSPECTION.</a> )

3	Windshield wiper arm and blade (See <a href="#">WINDSHIELD WIPER ARM AND BLADE REMOVAL/INSTALLATION.</a> ) (See <a href="#">WINDSHIELD WIPER ARM AND BLADE ADJUSTMENT.</a> )
4	Rain sensor (See <a href="#">RAIN SENSOR REMOVAL/INSTALLATION.</a> )
5	Windshield washer hose (See <a href="#">WINDSHIELD WASHER HOSE REMOVAL/INSTALLATION.</a> )
6	Headlight cleaner hose (See <a href="#">HEADLIGHT CLEANER HOSE REMOVAL/INSTALLATION.</a> )
7	Headlight cleaner actuator (See <a href="#">HEADLIGHT CLEANER ACTUATOR REMOVAL/INSTALLATION.</a> )
8	Headlight cleaner nozzle (See <a href="#">HEADLIGHT CLEANER NOZZLE REMOVAL.</a> ) (See <a href="#">HEADLIGHT CLEANER NOZZLE INSTALLATION.</a> )
9	Windshield washer nozzle (See <a href="#">WINDSHIELD WASHER NOZZLE REMOVAL/INSTALLATION.</a> ) (See <a href="#">WINDSHIELD WASHER NOZZLE CLEANING.</a> )
10	Washer tank (See <a href="#">WASHER TANK REMOVAL/INSTALLATION.</a> )
11	Rear washer motor (See <a href="#">REAR WASHER MOTOR REMOVAL/INSTALLATION.</a> ) (See <a href="#">REAR WASHER MOTOR INSPECTION.</a> )
12	Washer fluid-level sensor (See <a href="#">WASHER FLUID-LEVEL SENSOR REMOVAL/INSTALLATION.</a> ) (See <a href="#">WASHER FLUID-LEVEL SENSOR INSPECTION.</a> )
13	Windshield washer motor (See <a href="#">WINDSHIELD WASHER MOTOR REMOVAL/INSTALLATION.</a> ) (See <a href="#">WINDSHIELD WASHER MOTOR INSPECTION.</a> )
14	Headlight cleaner motor (See <a href="#">HEADLIGHT CLEANER MOTOR REMOVAL/INSTALLATION.</a> ) (See <a href="#">HEADLIGHT CLEANER MOTOR INSPECTION.</a> )
15	Rear washer nozzle (See <a href="#">REAR WASHER NOZZLE REMOVAL/INSTALLATION.</a> ) (See <a href="#">REAR WASHER NOZZLE ADJUSTMENT.</a> ) (See <a href="#">REAR WASHER NOZZLE CLEANING.</a> )
16	Rear washer hose (See <a href="#">REAR WASHER HOSE REMOVAL/INSTALLATION.</a> )
17	Rear wiper arm and blade (See <a href="#">REAR WIPER ARM AND BLADE REMOVAL/INSTALLATION.</a> ) (See <a href="#">REAR WIPER ARM AND BLADE ADJUSTMENT.</a> )
18	Rear wiper motor (See <a href="#">REAR WIPER MOTOR REMOVAL/INSTALLATION.</a> ) (See <a href="#">REAR WIPER MOTOR INSPECTION.</a> )